

Archie Ceiling Pendant(24597265)

Archie Ceiling Pendant(24597272)

Archie Ceiling Pendant(24597289)

# FREEDOM

Thank you for purchasing the **Archie Ceiling Pendant**. Before you begin to assemble your new lamp, please check to ensure that all hardware and parts have been supplied. This page lists all contents included in the carton(s).

Follow instructions closely as deviation from them may present a possible safety risk and may void your warranty.

It is recommended that assembly is done on a soft surface such as carpet to avoid any damage. If you experience any problems with your new purchase please phone Freedom Customer Service(FCS) on 1300 135 588 (Australia) or 0800 469 327 (New Zealand)

#### Care Information:

Periodically check and re-tighten all fasteners. Wipe down surfaces using a clean cloth weekly. If the external flexible cable or cord of this luminaire is damaged, it shall be exclusively replaced by the manufacturer or his service agent or a similar qualified person in order to avoid a hazard. Ensure screws are fastened firmly as small parts may present a choking hazard.

#### Non-user replaceable LED:

The light source contained in this luminaire shall only be replaced by the manufacture or his service agent or a similar qualified person.

#### Specifications:

**230-240V AC 50Hz 0.048A**

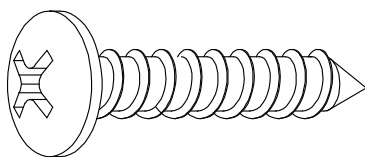
**IP20-Indoor Use only**



**LED 8W LED PF: 0.66**

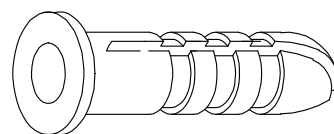
**Class II protection**

#### Hardware(Supplied)



**M4\*L25mm**

**A x2**

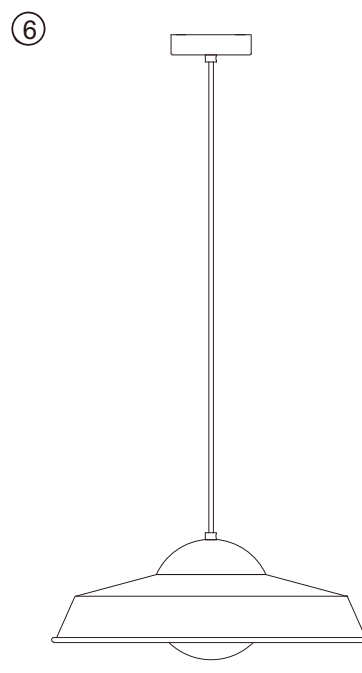
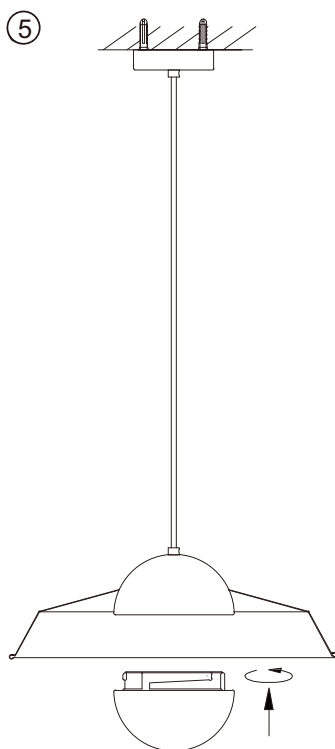
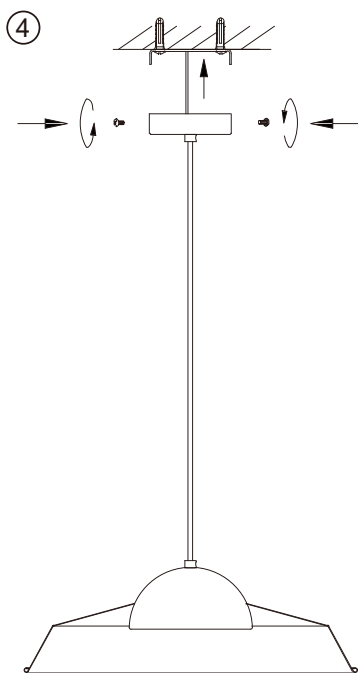
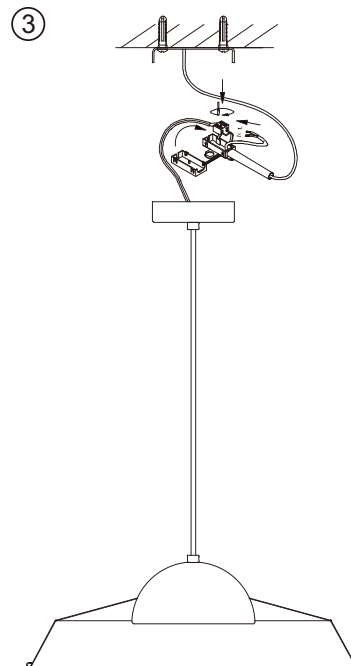
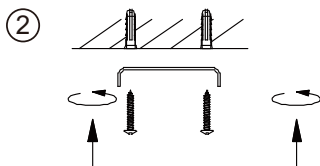
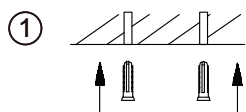


**Ø6\*L25mm**

**B x2**

Archie Ceiling Pendant(24597265)  
Archie Ceiling Pendant(24597272)  
Archie Ceiling Pendant(24597289)

# FREEDOM



LED 8W